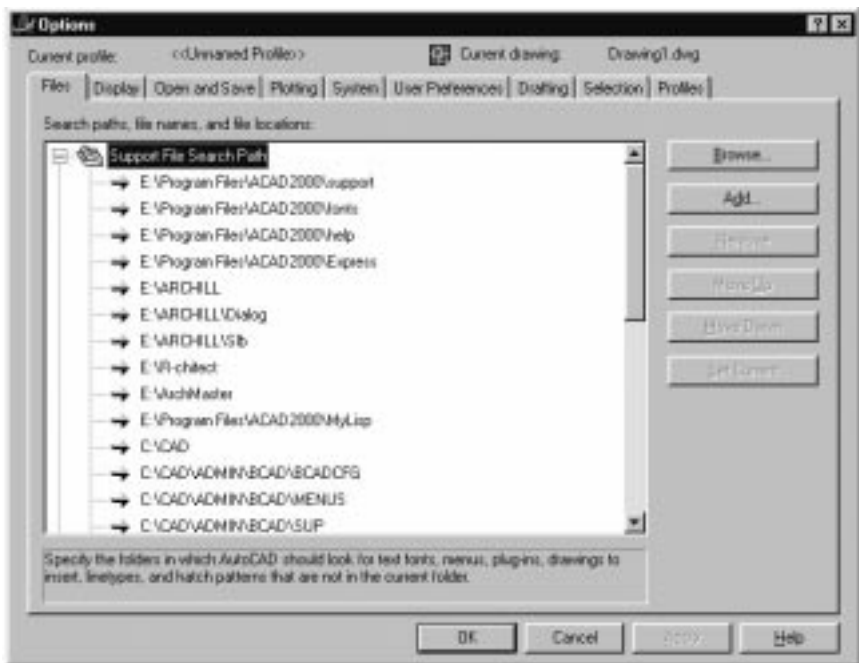


Getting Rid of "Smiley Faces" for R2000 - 2002

The "Smiley Face" in the toolbars is usually caused by the paths in "Support File Search Paths" not being there, or being incorrect. It can also be caused by doing a MENULOAD before the paths have been set. What happens is that AutoCAD gets confused and doesn't know where to find the little bitmap images for the toolbar buttons. To remedy this, you have to first make sure your paths are set correctly, then you have to go in and actually delete a couple of menu files that AutoCAD has compiled the first time you did the MENULOAD. With that long-winded explanation over, here's how you fix the problem.

NOTE: Remember, if you do plan to use the MASTER CONTROL toolbar, you must first have both ARCHILL and R-CHITECT loaded and their paths established. If you are not using the MASTER CONTROL menu, you will not need any of the references to MASTER below. The same goes for either ARCHILL or R-CHITECT.

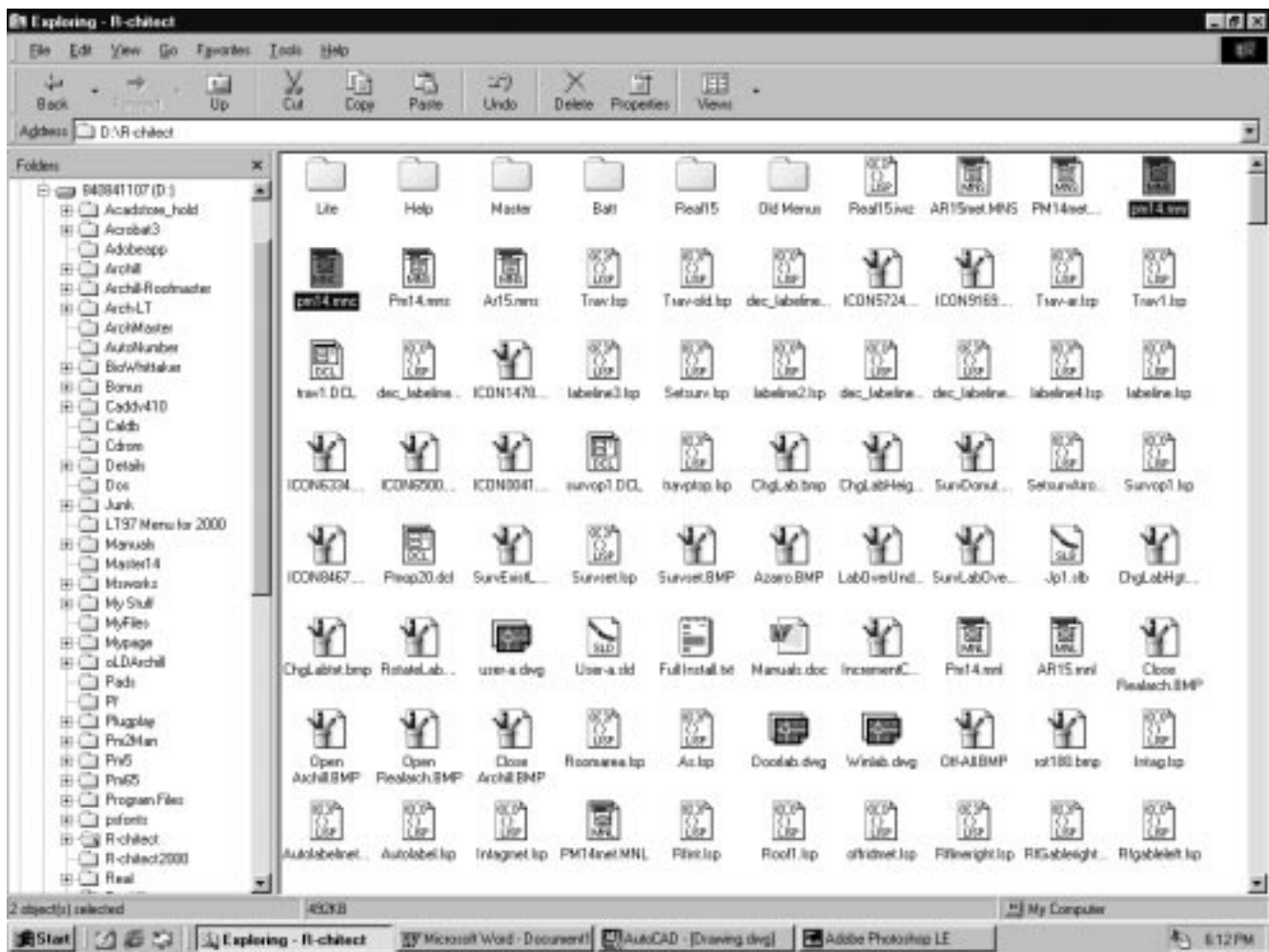
1. Open AutoCAD and check your "Support File Search Paths". You probably already know how to do this, so I will just say that they are located in the TOOLS pulldown under OPTIONS.



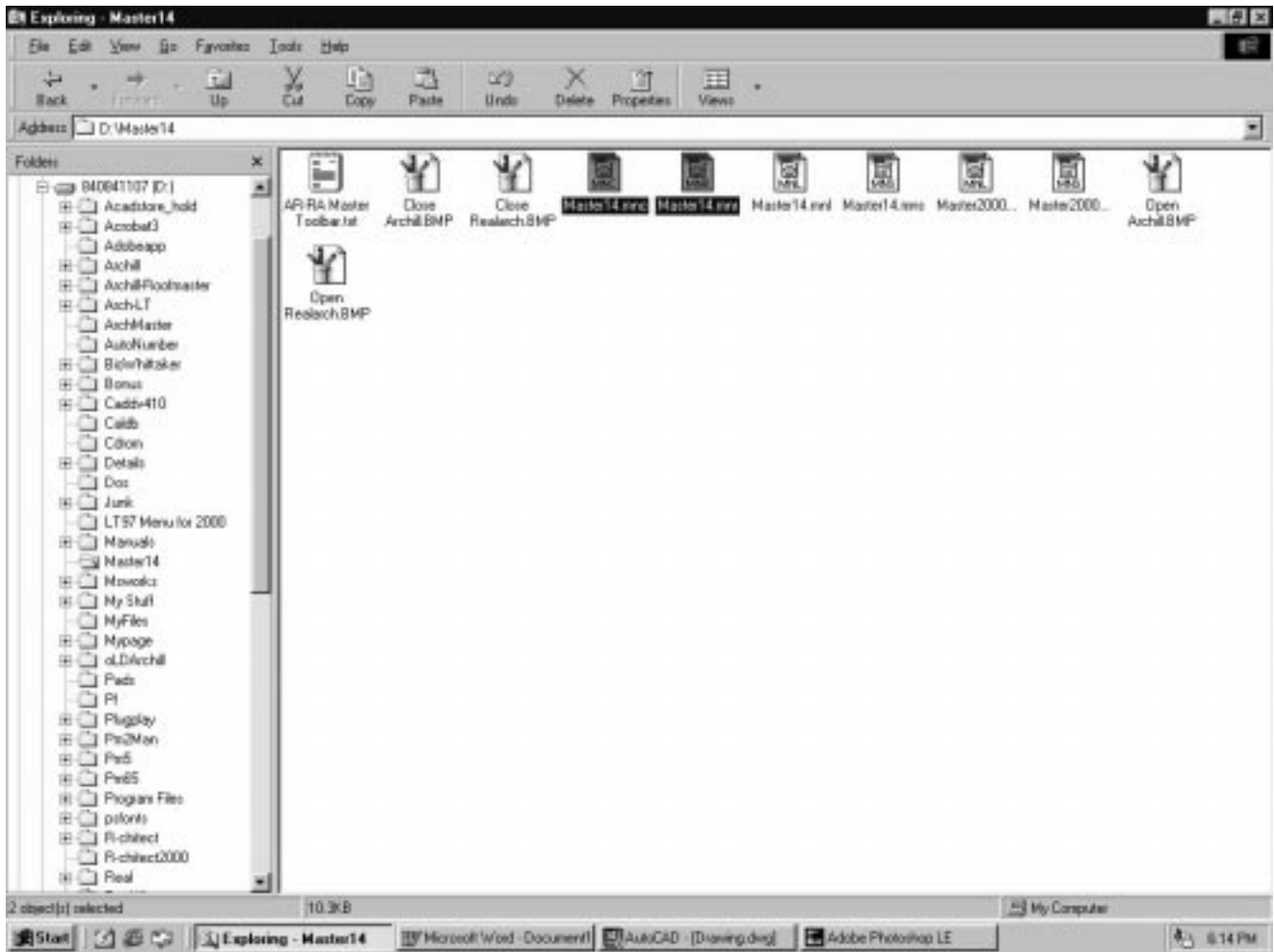
2. They are in the FILES tab. Make sure that these paths are there:

C:\ARCHILL\DIALOG
C:\ARCHILL\SLB
C:\ARCHILL
C:\R-CHITECT
C:\ARCHMASTER

This is assuming all your stuff is on C drive. If not, change the drive letter in the above paths. Once you have done this, close AutoCAD.



5. Finally, go to the ARCHMASTER folder and delete the files MASTER2000.MNR and MASTER2000.MNC. Again, do not delete MASTER2000.MNS



You can now start AutoCAD again. All the toolbars should be there. You may need to type `MENULOAD` and type `MASTER2000` in the "File name" box when the "Customize" dialog box comes up. Hit the `LOAD`, then the `CLOSE BUTTON` to finish.

